

Motorcycle Export / Import Guide Canada

Riders need to provide the following info to APC.

1. Passport Photo
2. Vin Photo
3. Motorcycle Photos
4. Insurance Value for Marine Transit Insurance
5. A detailed list of all equipment to be shipped in the container



Persona effects -
B534e.pdf

6. Next of Kin and contact details
7. Proof of Motorcycle Insurance for Canada one option is www.motorcycleexpress.com
8. Medical/Travel Insurance one option is ihi@ihi.com.
9. Visa <http://www.cic.gc.ca/english/visit/eta-start.as>
- 10.

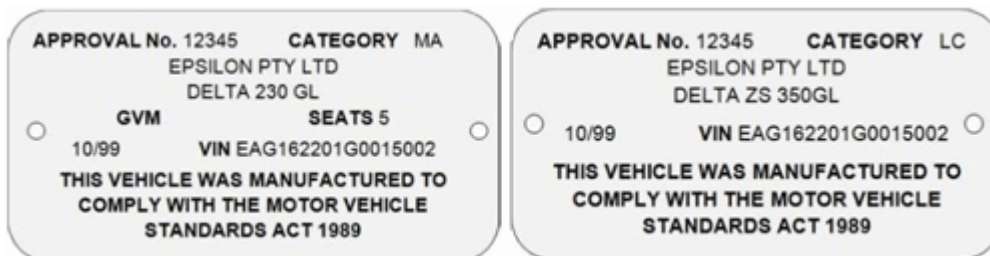


Canadian Cargo
Power of Attorney bla

11. All Bikes must hold an Import approval to re-enter Australia.

The application should be made under The Australian Plated Option

- A clear photo of the Australian identification plate fitted to the vehicle.
- Similar to below.



- Proof of ownership document (i.e. purchase invoice/receipt, statement, registration documents).
- If the vehicle has been or is to be modified—a statement setting out what modifications have been made to the vehicle.

- Best to apply online at https://infrastructure.gov.au/vehicles/imports/import_options/rav.aspx

<https://vis.infrastructure.gov.au/VISitePages/Registration.aspx>

- Sample form below



Addendum_IO5-Aust
ralian_Plated_Vehicles

12. Arrange Export container and pricing with an Agent such as **Containers Online**



CARGO ONLINE

A specialist division of Selsby Solutions

Address: Unit 52, 45-51 Huntley Street, Alexandria NSW 2015

PO Box 527, Alexandria NSW 1435

Telephone: 02 951 98 656

Direct Line: 02 951 98 661

Facsimile: 02 955 77 981

Email: yujen@cargoonline.com.au

www.cargoonline.com.au

- Arrange Marine Transit insurance (Approx 1.5% of insurance value.)
- Port Charges Outbound and Inbound
- Customs Charges Outbound and Inbound
 1. Outbound User Fee
 2. Inbound user fee
 3. Q/tine officer
 4. Customs Clearance
 5. Ctr p/up unpack underbond

- Arrange Land Transport of Container for Loading and rtn to Wharf.

<http://www.seasprayhaulage.com.au/>
tel: 0406006809

14. Arrange Canada Import / Export Container

- **CANADIAN CARGO & SHIPPING SERVICES LTD.,**
UNIT 60 - 8888 - 151ST STREET, TEL:- 604-585-6033
SURREY, B.C., FAX:- 604-585-6032
CANADA, V3R 0Z9 CELL:- 604-551-4523
E-MAIL:- cancargo@telus.net

- Port Charges Outbound and Inbound
- Customs Charges Outbound and Inbound

Outbound User Fee

Inbound user fee

Q/tine officer

Customs Clearance

Ctr p/up unpack underbond

Bike Storage

- Arrange Land Transport of Container for unloading / Loading and rtn to Wharf.

- Apply for Convention Application

International Events and Convention Services Program
Canada Border Services Agency / Government of Canada

Sample Letter



APC Canada Import
CONVENTION 2ND LI